



9 Albert Embankment, London
SE1

GARTON JONES.COM

9 Albert Embankment, London , SE1

GARTON JONES.COM

9 Albert
Embankment
London
SE1 7SP

Lettings:
+44 (0) 20 7735 1888
nineelms@gartonjones.com
www.gartonjones.com

£475 Per Week

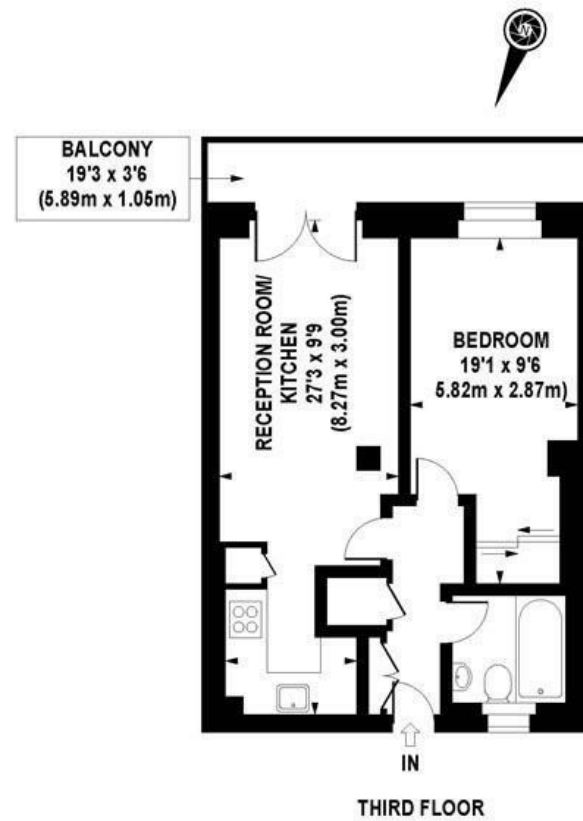
A modern 1-bedroom apartment of 500sq.ft (46sq.m) offered in 9 Albert Embankment, a popular modern development just moments from the banks of the River Thames. This spacious 1 double bedroom apartment offers stylish living space with an integrated kitchen, a good-sized open plan reception room opening onto a generous balcony, double bedroom with fitted wardrobes, good storage, and luxury bathroom suite. 9 Albert Embankment is a secure development with lift, 24-hour concierge and on-site convenience store. Located within easy reach of London's trendy South Bank offering a great selection of shops, bars, and restaurants. Local transport links include Vauxhall Underground Station (Victoria Line) and Overground for links into the City and West End.

Please note furniture may differ to that shown in the current photos.

- Electricity Supply — Mains | Water Supply — Mains | Sewerage — Mains | Heating — Electric Radiators
- Broadband & Mobile Signal : Check Coverage via Ofcom
- Parking: No Parking Included
- Lift Access
- Building Safety: EWS1 Available on Request
- Council Tax Band E (London Borough of Lambeth)
- 5 Week Security Deposit
- Holding deposit equivalent to 1 week of rent
- Rent to be payable monthly in advance
- EPC Rating C (76)

- 1 Bedroom
- 500 Sq.ft (46 Sq.m)
- Open Plan Reception
- Modern Integrated Kitchen
- Bathroom
- Balcony
- Overlooking Communal Courtyard
- 24 Hour Concierge
- On-Site Convenience Store
- 0.5 Miles to Vauxhall Station





APPROX. GROSS INTERNAL AREA 500 sq.ft / 46.46 sq.m

COMPLIANT WITH RICS CODE OF MEASURING PRACTICE Floorplan is for illustrative purposes only and is not to scale. Every attempt has been made to ensure the accuracy of the floorplan shown, however all measurements, fixtures, fittings and data shown are an approximate interpretation for illustrative purposes only. Liability for errors, omissions or mis-statement through negligence or otherwise is hereby excluded.

